

The A515 Through Yoxall - A Road No Longer Fit For Purpose

A Report detailing the problems and solutions

A Report from the Yoxall Parish Council

in support of the petition

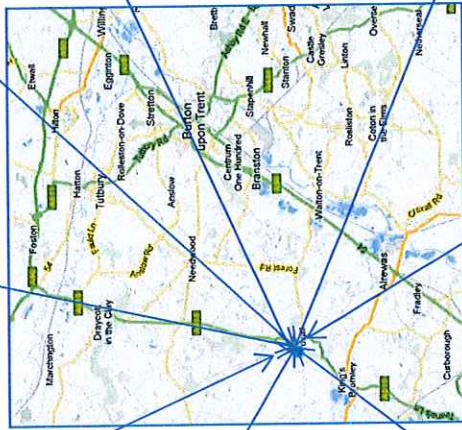
for a Weight Restriction on A515

from

Stubby Lane, Draycott in the Clay through Yoxall and Kings Bromley to
Wood End Lane, Curborough.

Contents of Report

- Page 1. FRONT COVER
- Page 2. TITLE PAGE
- Page 3. INDEX
- Page 4. PROFIT BEFORE SAFETY: ILLUSTRATIONS OF THE PROBLEMS
- Page 5 and 6. EXECUTIVE SUMMARY
- Page 7. PHYSICAL CONSTRAINTS OF THE CARRIAGEWAY-NOT UP TO STANDARD
- Page 8. DIMENSION SURVEY OF A515 small scale. See Appendix A for large scale drawings
- Page 9. TRAFFIC DATA
- Page 10. EXAMPLES OF THE PETITION AND COMMENTS FROM THE PUBLIC
- Page 11. PHOTOGRAPHIC EVIDENCE OF INCIDENTS
- Appendix A. LARGE SCALE DRAWINGS OF A515 IN YOXALL
- Appendix B. COMMENTS MADE BY PUBLIC ON SOCIAL MEDIA



Profit Before Safety

Yoxall the A515 a Road no Longer Fit for Purpose

EXECUTIVE SUMMARY

- The A515 through Yoxall does not meet current design standards for an A road and HGVs cannot navigate it with safety.
- When HGVs use the A515 through Yoxall they cause increased particulate pollution, physical danger to pedestrians, intimidate primary schoolchildren, threaten the elderly and make it impossible for the disabled to navigate the footpaths, and in addition cause damage to property.
- The proposed solution is to place a weight restriction on the section of the A515 from Stubby Lane, Draycott in the Clay to Wood End Lane, Curborough and direct HGVs onto the A50 and A38 which are designed to take these vehicles, thereby keeping them away from rural villages and rural roads which are incapable of safely carrying this traffic.
- Future policy decisions relating to construction traffic and temporary site works arising from construction of HS2, implications of possible road pricing and further development of Fradley, Burton and Marchington distribution sites should all be recognised as major policy decisions that will have significant and increasingly detrimental effects on the A515 and the villages along its route.

EXECUTIVE SUMMARY

- A petition in Yoxall has been signed by 1835 petitioners; principally residents but supported by people that work in Yoxall and sympathetic visitors that demand a weight limit be put on a section of the A515 to stop HGVs using the A515 through the villages.
- The facts that will be illustrated in this report have already been acknowledged by Staffordshire County Council officers and Councillors.
- The key issue is that the A515 is a ROAD NO LONGER FIT FOR PURPOSE and the operators of HGVs are placing:

“PROFIT BEFORE SAFETY.”

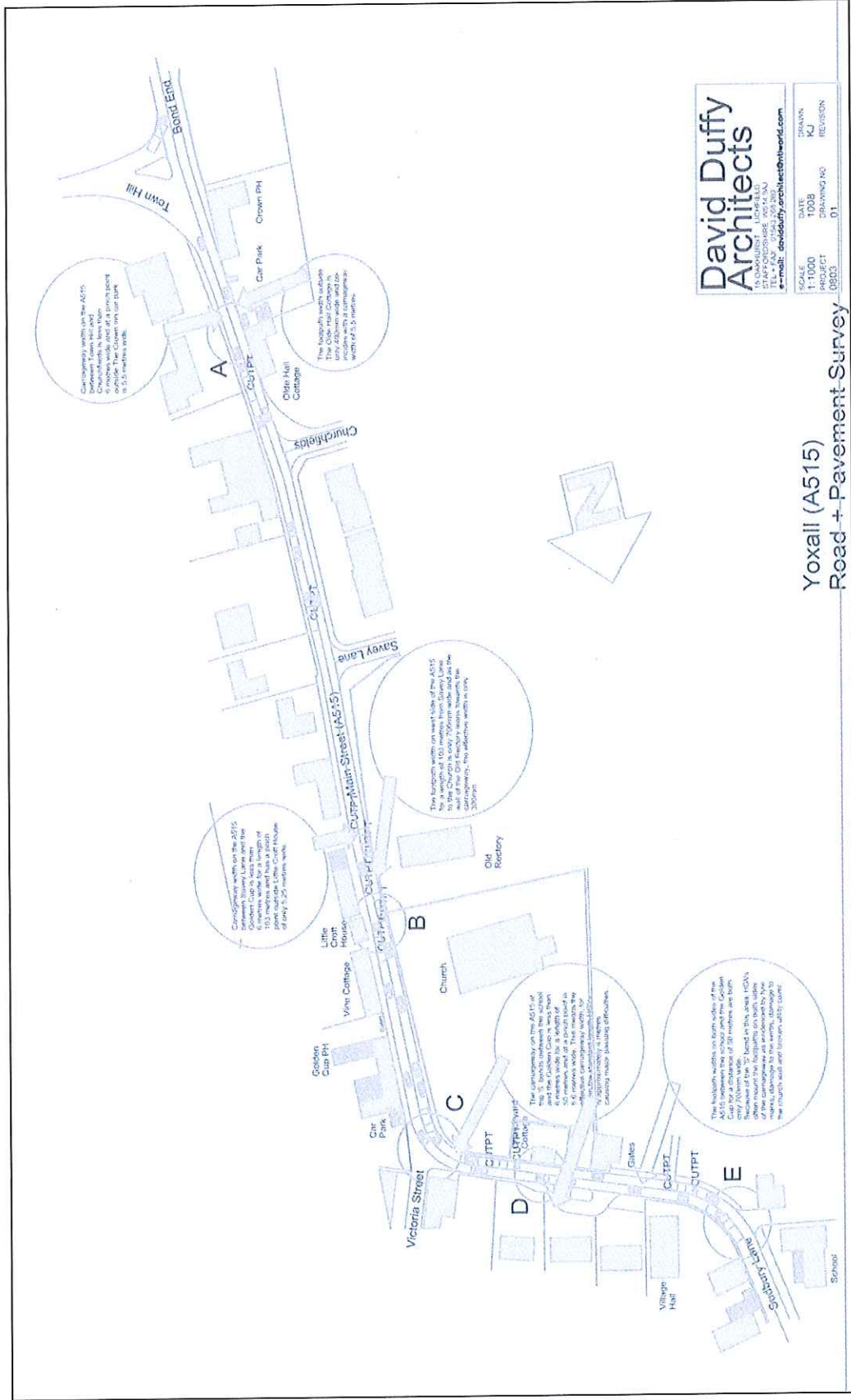
PHYSICAL CONSTRAINTS OF THE CARRIAGEWAY

The following table compares the existing A515 in Yoxall with the current design standards.
See page 8 and Appendix for detail

CRITERIA	EXISTING CONDITION	CURRENT DESIGN STANDARD	DEFICIENT CRITERIA
Carriageway widths	Less than 6.00 metres throughout village. Down to 5.25 metres.	Minimum 7.3 metres.	-1.3 metres generally. -2.05 metres at pinch points.
Stress point width	Effectively 4 metres on S bends.	Minimum 7.3 metres.	-3.3 metres at S bend.
Footpaths	Maximum 1.5 metres. 0.7 and 0.6 metres generally. 0.3 at critical points.	Minimum 1.8 metres.	-0.3 metres at widest. -1.1 metres generally. -1.5 metres at pinch points.
Line of sight	Blind spot on S bend. Blind spot at junction of Hadley Street and A515	2 metres from back of kerb.	No sight lines at critical S bend. No sight lines at Hadley Street/A515.

The facts are clear: HGVs using the A515 through Yoxall are placing PROFIT BEFORE SAFETY.

Small scale survey of road conditions showing deficiencies; see Appendix for enlarged detail



Yoxall the A515 a Road no Longer Fit for Purpose

TRAFFIC DATA

HGVs Counted north and south through Yoxall
[count taken by Kings Bromley Parish Council]

Basis of Data	Time	Number of HGVs	HGVs per hour/number per second
SCC File 27F078	07:00 to 19:00	503	42=1 every 85 seconds
Traffic count	19:00 to 07:00	334	28=1 every 120 seconds
Traffic count [night peak]	00:00 to 01:00	43	43=1 every 80 seconds
Traffic count [school start]	08:00 to 09:00	42	42=1 every 85 seconds
Traffic count [school home]	15:00 to 16:00	41	41=1 every 85 seconds

The operators are placing
PROFIT BEFORE SAFETY.



Yoxall the A515 a Road no Longer Fit for
Purpose

THE PETITION and SUPPORT from the PUBLIC

In addition to the 1835 signatures the public were invited to leave comments on a social media page. A copy of the Petition heading sheet and three examples of the 98 comments are set out on this page.

A515 ACTION GROUP

We the undersigned demand a 7.5 ton weight restriction on the A515 and auxiliary roads between Wood End Lane, Kings Bromley and Stubby Lane, Draycott in the Clay.

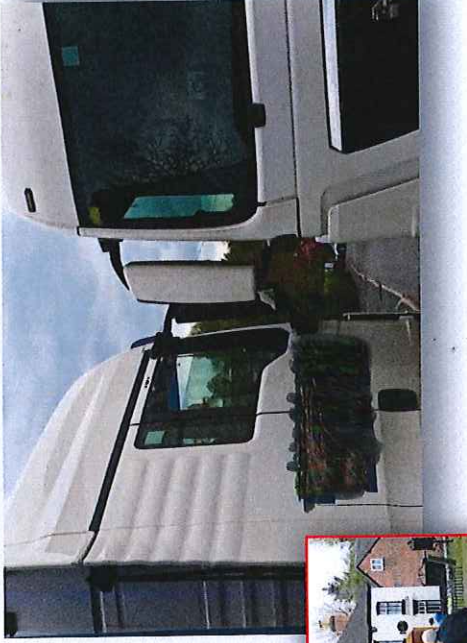
DATE	PRINT NAME	SIGNATURE	POSTCODE
6/5/15	[REDACTED]	[REDACTED]	[REDACTED]
6/5/15	[REDACTED]	[REDACTED]	[REDACTED]
1/5/15	[REDACTED]	[REDACTED]	[REDACTED]

"I have two young children and walk to school every morning along the A515 and consistently worry that a serious accident is imminent. On a daily basis I worry about the pavements; evident by the recent damage to the memorial railings and church wall. Proactive action is required now before we are responding to a seriously injured individual or worse, a fatality. Please act without further delay." JW

"The A515 running through Yoxall was never intended for heavy traffic. It is not fit for purpose in relation to heavy vehicles that have, on occasions, to mount the very narrow pavements to allow other heavy vehicles to pass. At some corners long vehicles have to cross the centre line to negotiate the bend. The position for pedestrians and cyclists is hazardous. The old, children and disabled find it particularly difficult on the narrow pavements when heavy vehicles pass close by - often at too fast a speed - creating a strong back draught causing difficulties in balance. The road is so unfit for purpose for heavy vehicles that it is only a matter of time before there will be a sad, yet avoidable, serious accident. There is a simple and obvious line of action. Let's take it before its too late." WO.

"I've nearly been killed by an oncoming lorry as I walked the path on the church corner it came at high speed and mounted the curb driving right towards me. I had merely seconds to dive over the church wall to escape being flattened or worse. It was lucky I was walking towards the direction of the traffic, had I been walking with my back to the traffic I may not be alive today to tell you this story." RK.

INCIDENTS and PHOTOGRAPHIC EVIDENCE



PROFIT BEFORE SAFETY

Yoxall the A515 a Road no Longer Fit for Purpose

APPENDIX A

LARGE SCALE DRAWINGS OF A515 IN YOXALL

Detail A – A515 at The Crown Public House

Detail B – A515 at The Old Rectory and Little Croft House

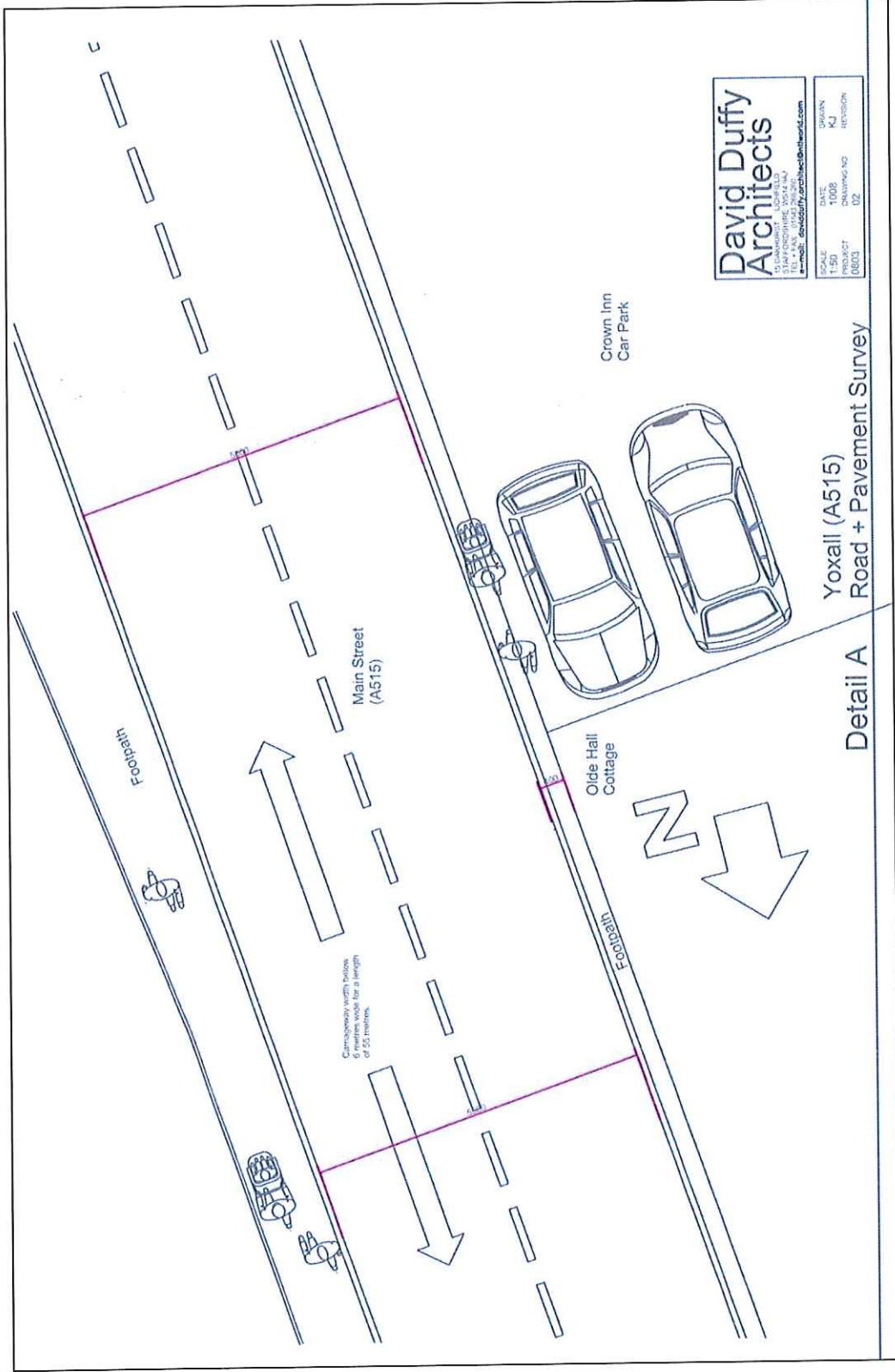
Detail C – A515 at junction with Victoria Street

Detail D – A515 at Churchyard Cottage

Detail E – A515 at junction with school access

APPENDIX A

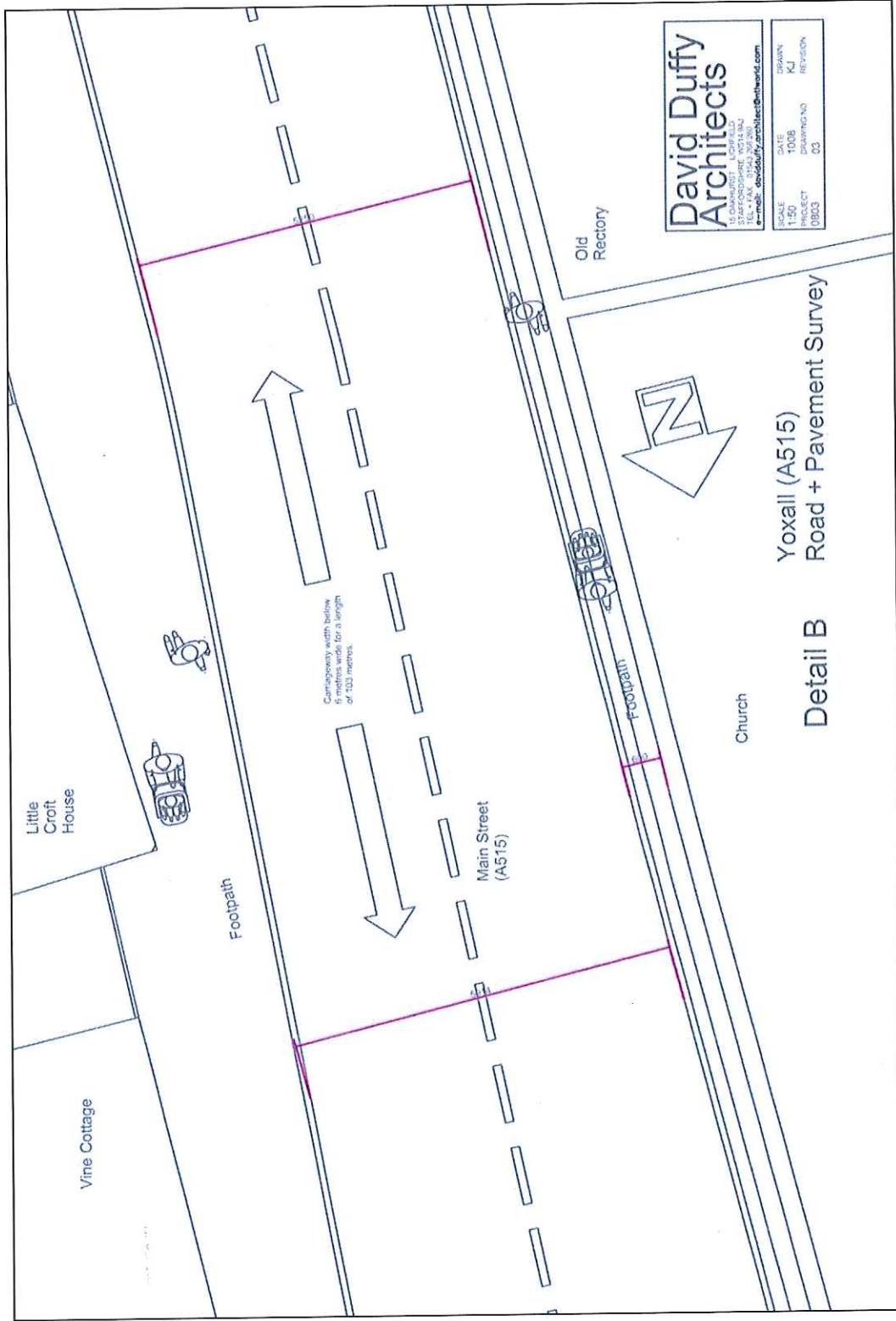
Detail survey of road Detail A



Yoxall the A515 a Road no Longer Fit for Purpose

APPENDIX A

Detail survey of road Detail B

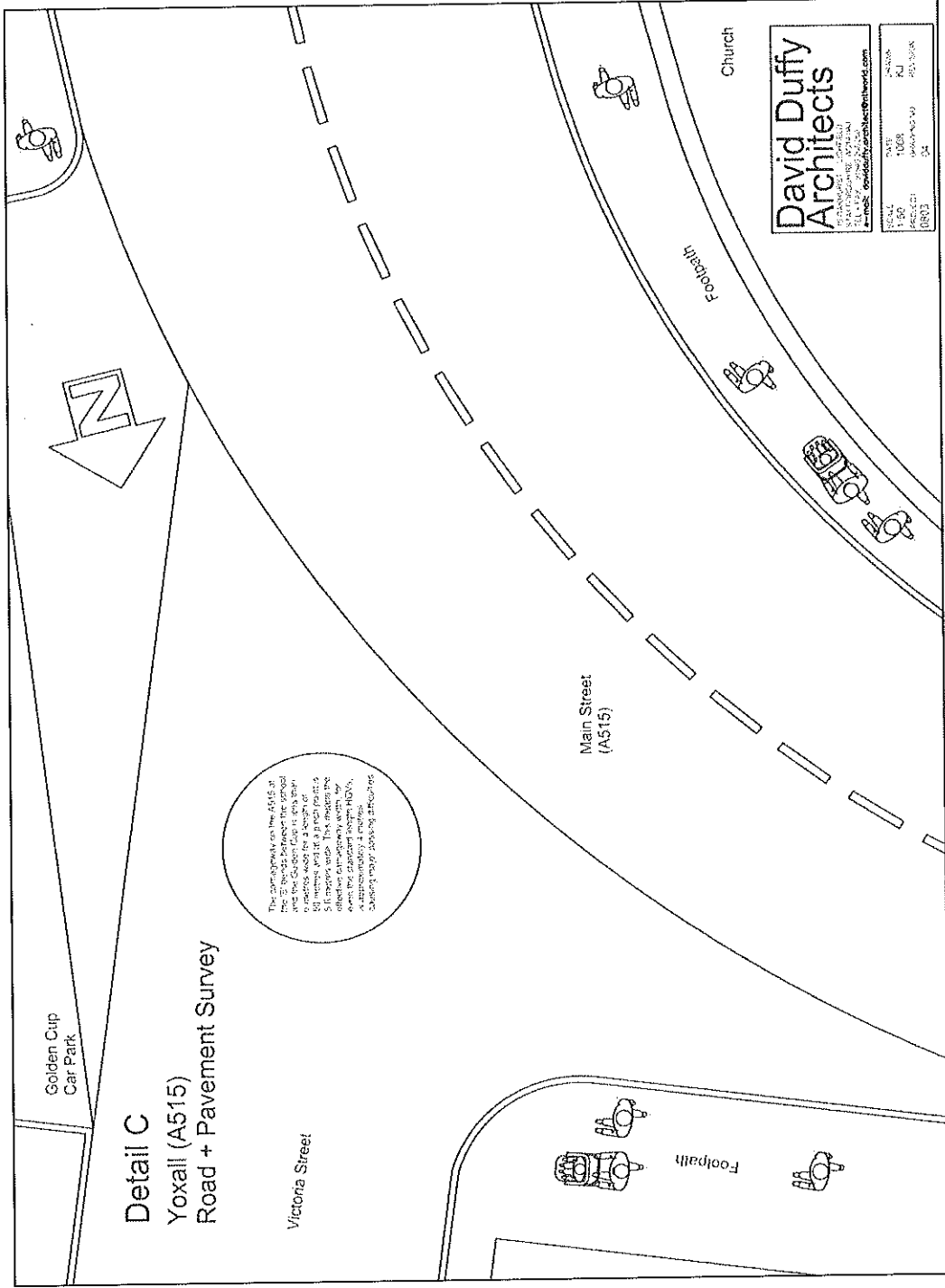


Yoxall (A515)
 Road + Pavement Survey
 Detail B

Yoxall the A515 a Road no Longer Fit for
 Purpose

APPENDIX A

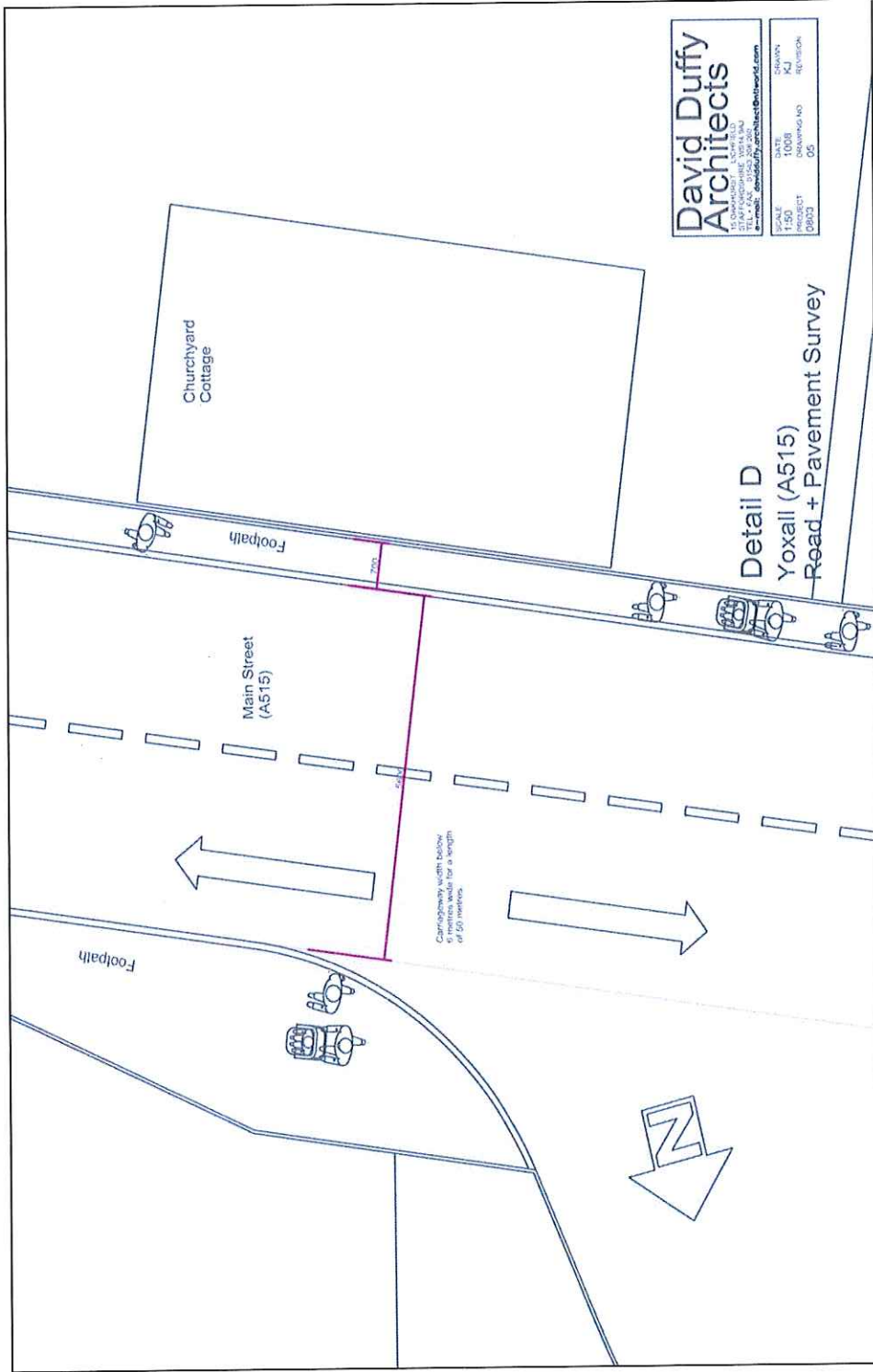
Detail survey of road Detail C



Yoxall the A515 a Road no Longer Fit for Purpose

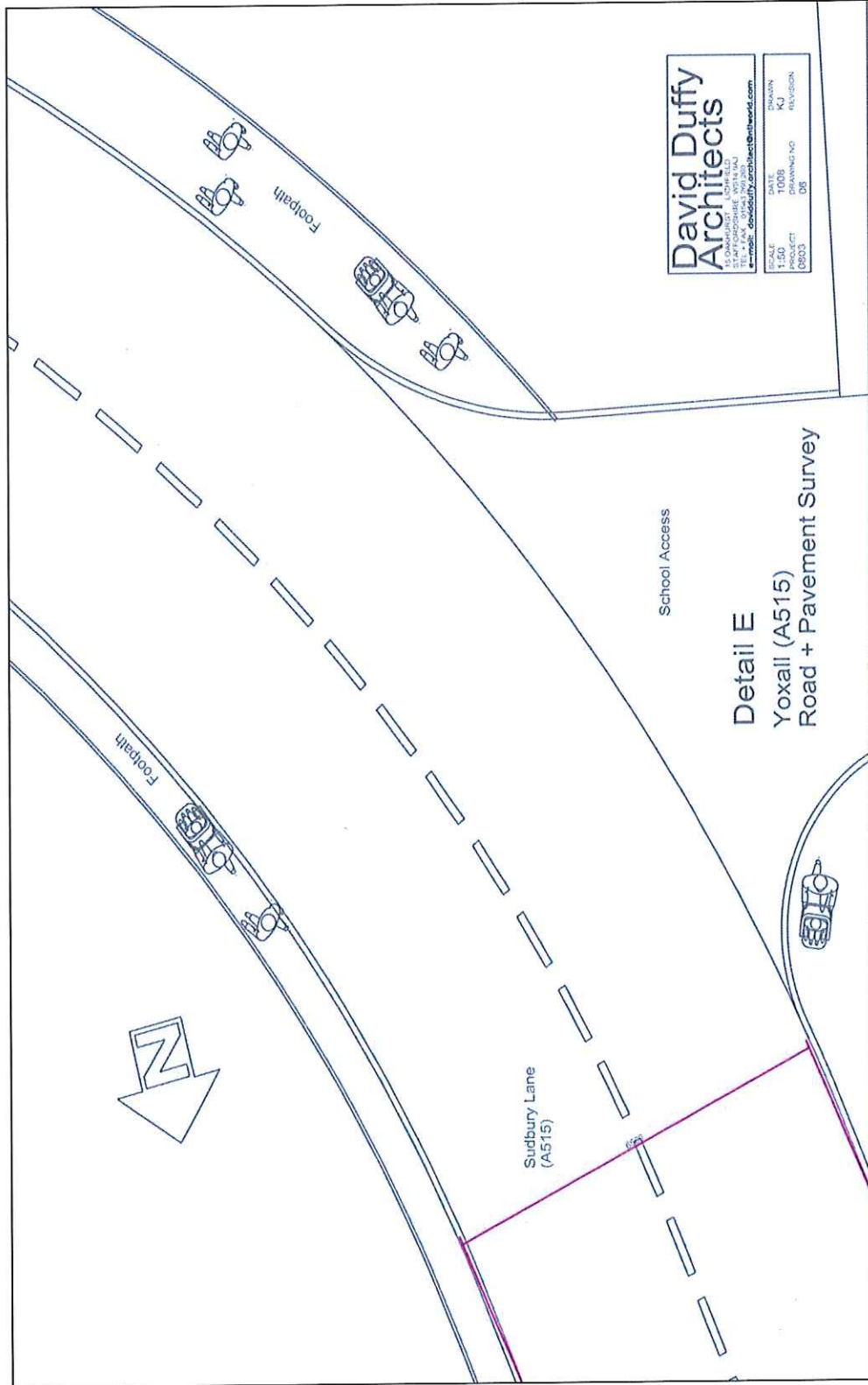
APPENDIX A

Detail survey of road Detail D



Yoxall the A515 a Road no Longer Fit for Purpose

APPENDIX A
Detail survey of road Detail E



Yoxall the A515 a Road no Longer Fit for Purpose

APPENDIX B

COMMENTS MADE BY PUBLIC ON SOCIAL MEDIA

In support of the petition that was signed by 1835 people the public were invited to put comments onto a social media page.

The following are the ninety eight comments put by the public on the social media page. See separate document.